

(\*) See 2nd page

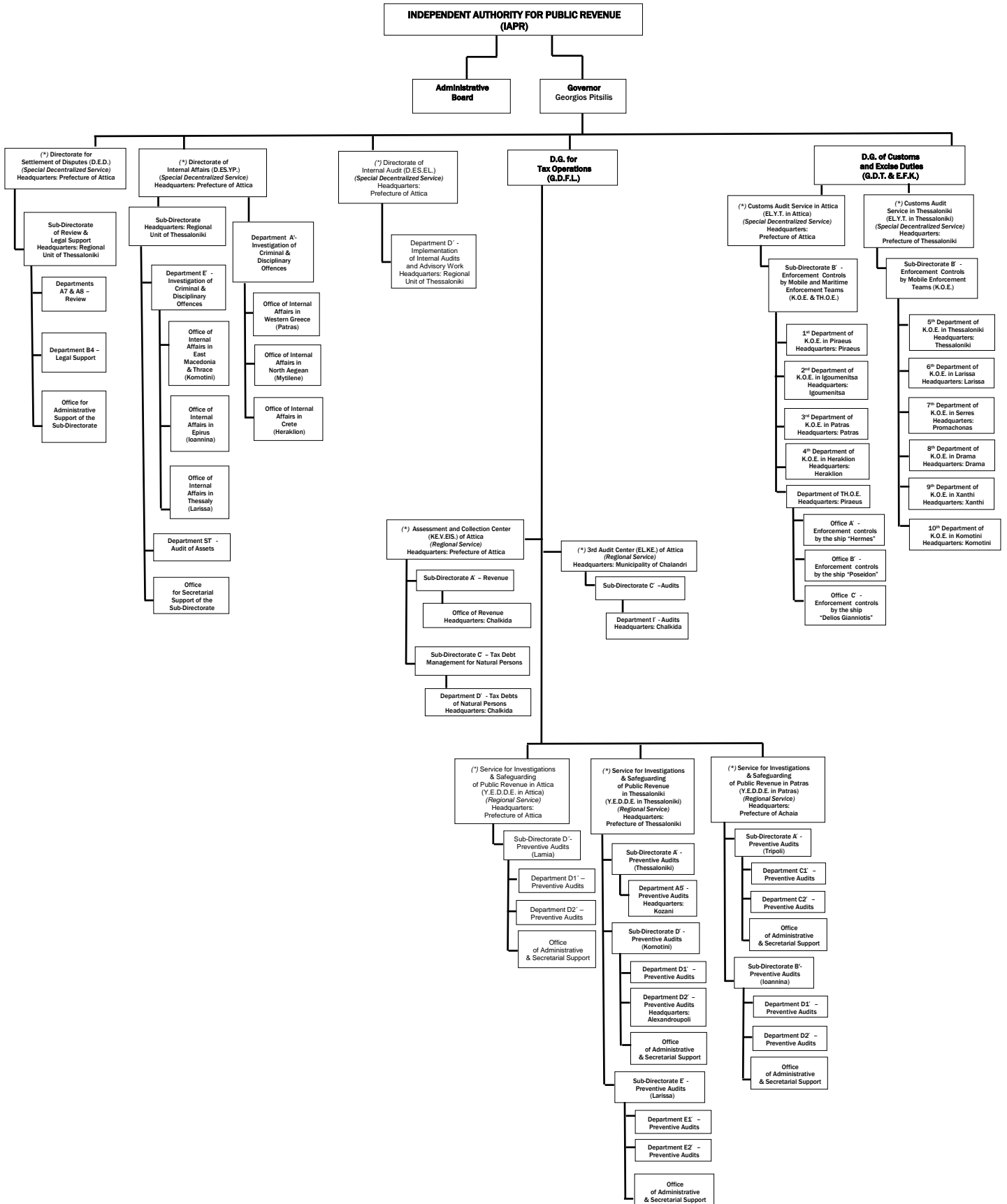
(\*\*) Supervised by the Directorate for Planning and Evaluation of Audits and Investigations (D.I.P.A.E.E.)

(\*\*\*) For issues regarding management of customs offences, preventive and ex-post controls and prosecution of the A'-B' and B' Class Customs Offices, which depend on them

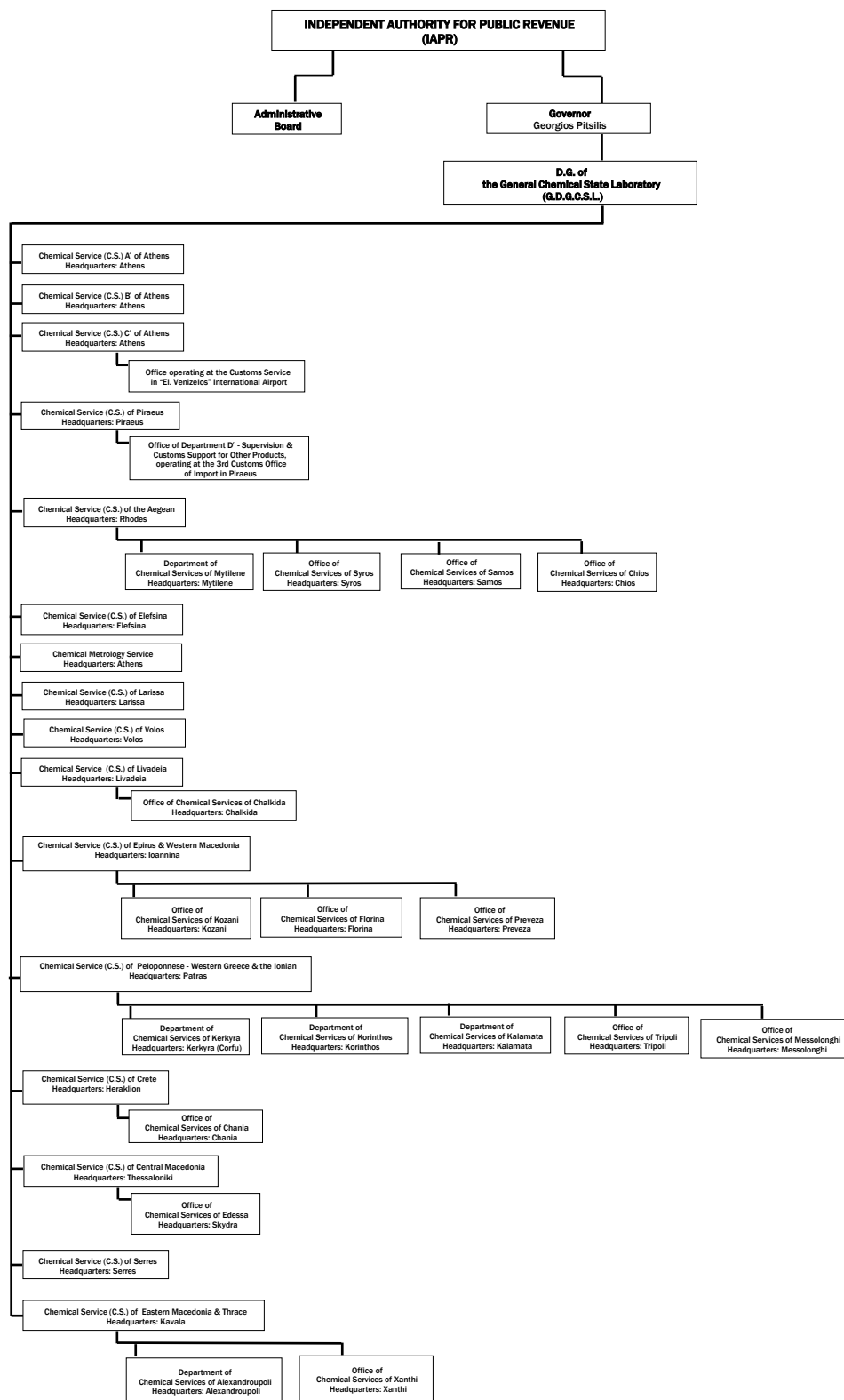
(\*\*\*\*) They are subordinate to Customs Offices of A', A'-B' and B' Class and operate outside their headquarters

(\*\*\*\*\*) See 3rd page

**SERVICES UNITS OPERATING OUTSIDE THEIR HEADQUARTERS**



**(\*\*\*\*\*) REGIONAL CHEMICAL SERVICES (C.S.)**



**OFFICES OPERATING IN IAPR**

- Special Legal Office for Public Revenue (E.N.G.D.E.): a) Department A - Tax & Customs Affairs and b) Department B - Administrative Enforcement & Other Affairs
- Offices of Employees Service Councils (A', B', C)
- Office of the Supreme Chemical Council (A.X.S.)
- Office of Supreme Committee for Customs Disputes (A.E.T.A.)

**ENTITY SUPERVISED BY THE IAPR**

- (WITHIN THE PUBLIC SECTOR)**
- Legal Entities of Public Law:**
- Special Fund for the Production and Quality Control of Alcohol and Alcoholic Beverages (E.T.E.P.P.A.A.)