

(*) See 2nd page

(**) Supervised by the Directorate for Planning and Evaluation of Audits and Investigations (D.I.P.A.E.E.)

(***) For issues regarding management of customs offences, preventive and ex-post controls and prosecution of the B' Class Customs Offices, which depend on them

(****) They are subordinate to Customs Offices of A' and B' Class and operate outside their headquarters

(*****) See 3rd page

OFFICES OPERATING IN IAPR

- Special Legal Office for Public Revenue (E.N.G.D.E.): a) Department A' - Tax & Customs Affairs and b) Department B' - Administrative Enforcement & Other Affairs

- Offices of Employees Service Councils (A', B', C')
- Office of the Supreme Chemical Council (A.X.S.)
- Office of Supreme Committee for Customs Disputes (A.E.T.A.)

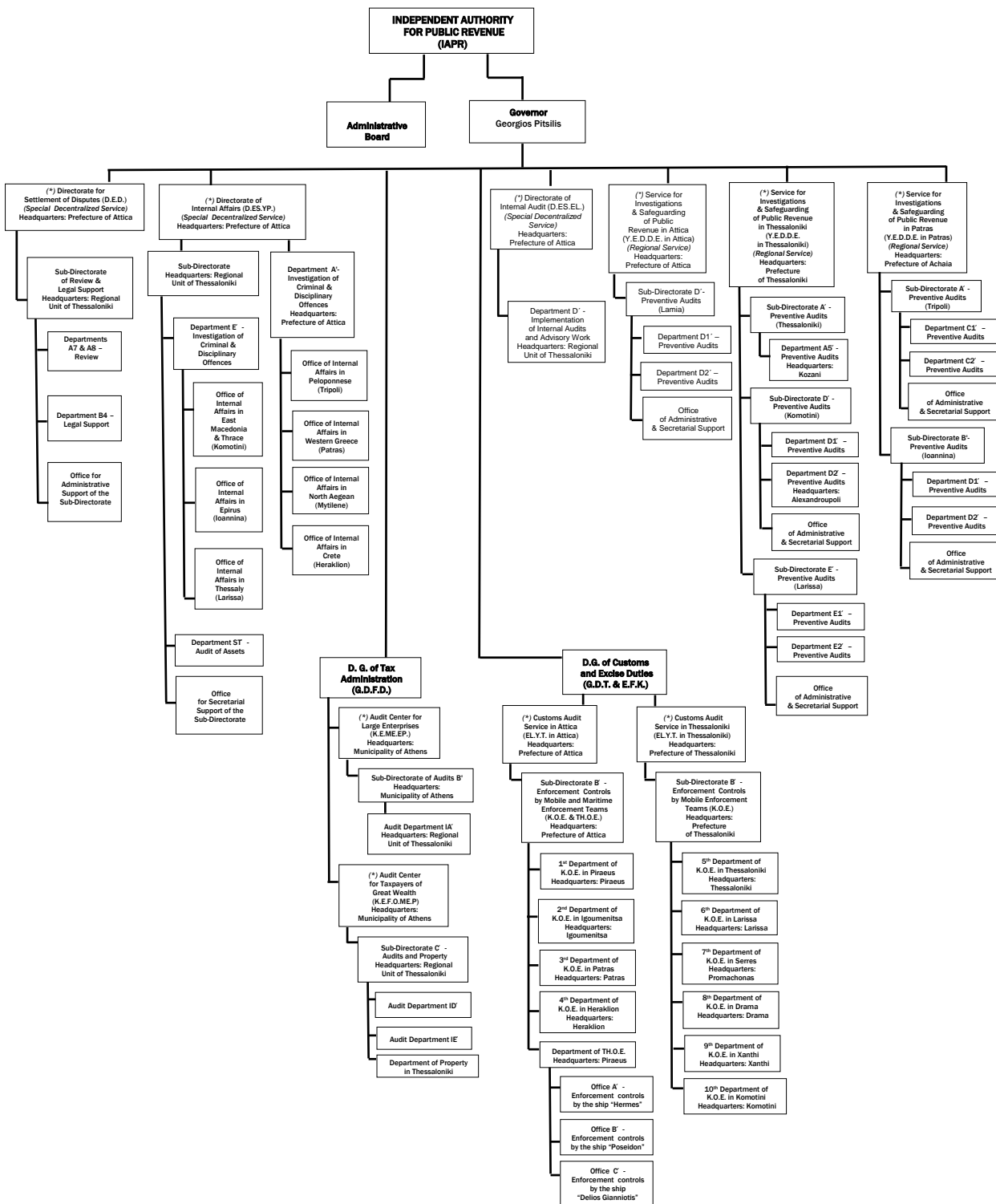
ENTITY SUPERVISED BY THE IAPR

(WITHIN THE PUBLIC SECTOR)

Legal Entities of Public Law

- Special Fund for the Production and Quality Control of Alcohol and Alcoholic Beverages (E.T.E.P.P.A.A.)

SERVICES UNITS OPERATING OUTSIDE THEIR HEADQUARTERS.



SERVICES UNITS OPERATING OUTSIDE THEIR HEADQUARTERS

